

NEW YORK

New York City is the most populous city in the United States, while the New York metropolitan area ranks among the world's most populous urban areas. It is a leading global city, exerting a powerful influence over worldwide commerce, finance, culture, fashion and entertainment. The city is also an important center for international affairs, hosting the United Nations headquarters.

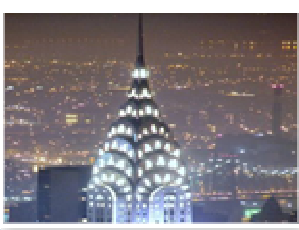
Located on the **Atlantic coast** of the Northeastern **United States**, the city consists of five boroughs: The Bronx, Brooklyn, Manhattan, Queens, and Staten Island. New York is notable among American cities for its high use and 24-hour availability of mass transit, and for the overall density and diversity of its population. The city is sometimes referred to as "The City that Never Sleeps", while other nicknames include Gotham and the **Big Apple**.



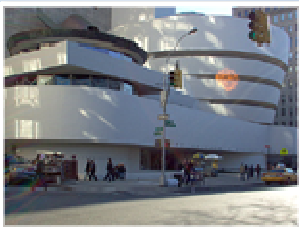
The Statue of Liberty, officially titled Liberty Enlightening the World was presented to the United States by "the people of France" in 1886. Standing on Liberty Island in **New York Harbor**, it welcomes visitors, immigrants, and returning Americans traveling by ship. The statue is of a robed woman holding a torch, and is made of a sheeting of pure copper, hung on a framework of steel (originally puddled iron) with the exception of the flame of the torch, which is coated in gold leaf (originally made of copper and later altered to hold glass panes).

The Empire State Building is a 102-story Art Deco skyscraper at the intersection of **Fifth Avenue** and West 34th Street. Its name is derived from the nickname for the state of New York. It stood as the world's tallest building for more than forty years, from its completion in 1931 until construction of the World Trade Center's North Tower was completed in 1972. Following the destruction of the World Trade Center in 2001, the Empire State Building once again became the tallest building in New York City and **New York State**.

Rockefeller Center is a complex of 19 commercial buildings covering 22 acres (89,000 m²) between 48th and 51st streets . Built by the Rockefeller family, it is located in the center of Midtown **Manhattan**, spanning between **Fifth Avenue** and Seventh Avenue. It was declared a National Historic Landmark in 1987. It is the largest privately held complex of its kind in the world, and an international symbol of modernist architectural style.



The Chrysler Building is an Art Deco skyscraper in **New York City**, located on the east side of Manhattan in the Turtle Bay area at the intersection of 42nd Street and Lexington Avenue. Standing at 319 metres (1,047 ft).



Guggenheim Museum. The spiraling galleries are ideal for exhibiting art works. It was designed by the famous American architect Frank Lloyd Wright and was built in 1959.

The **lower Manhattan** business district is the fourth largest central business district in the United States.

Central Park with its lawns, trees and lakes is popular for recreation and concerts and is home to the **Metropolitan Museum of Art** and Central Park Zoo.

Fifth Avenue is a major thoroughfare in the center of the borough of **Manhattan**. Between 34th Street and 59th Street, it is also one of the premier shopping streets in the world. Avenue serves as a symbol of wealthy **New York**. It is consistently ranked as one of the most expensive streets in the world.

Broadway, as the name implies, is a wide avenue in **New York** City, which runs the full length of Manhattan and continues into the Bronx. It is the oldest north-south main thoroughfare in the city, dating to the first New Amsterdam settlement. A stretch of Broadway is famous as the pinnacle of the American theater industry.

Greenwich Village, often simply called "the Village", is a largely residential area on the lower west side of southern **Manhattan**. A large majority of the district is home to upper middle class families.

Brooklyn Bridge. The view is quite nice going into Manhattan.

USEFUL INFORMATION

Tourism information

NYC & Company (New York City's official marketing, tourism and partnership organization)

810 Seventh Ave., 3 fl

New York, NY 10019

Tél : +(1) 212-484-1200